

Bantam Flier



BY TRAIL-LITE

Choose the Bantam Flier "Rocky Mountain" Edition, featuring all-terrain tires and a higher ground clearance - allowing you to go almost anywhere your heart desires.



**The Ultimate in
Lightweight Towability!**



Bantam Flier



BY TRAIL-LITE



LOW-PROFILE TOWABILITY

The Bantam Flier from R-Vision is the latest in a long line of innovative lightweight towables built to allow owners of mini-vans and smaller SUVs to enjoy the fun and excitement of RV living without the hassles of fold-down camping. Choose from our smartly designed floorplans (17', 17'UL and 18' models) that are sure to fit your family's camping needs and budget.

With a unique low profile air conditioner and television antenna, the Bantam Flier offers a sleek exterior profile that is designed for easy towing and storage.

The Bantam Flier is perfect for weekend get-a-ways or extended camping trips and vacations, featuring a bathroom, kitchen, gas range, refrigerator, furnace and optional built-in stereo system.

Whoever thought that you had to sacrifice living space when choosing a lightweight travel trailer has never experienced the all-new Bantam Flier from R-Vision. There's also a nice-sized kitchen and loads of interior and exterior storage space! The expandable tent end offers comfortable bed areas, while the sofa and dinette also convert into additional sleeping space.

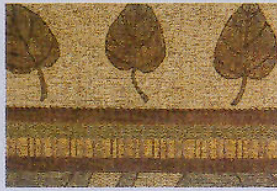


Lightweight Towability





Moose is Loose



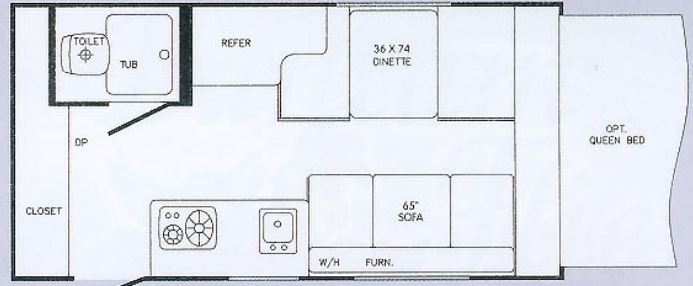
Sage



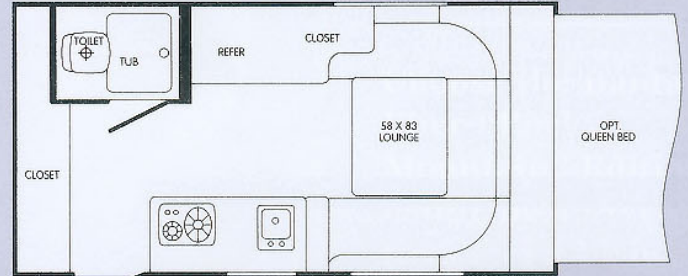
Wheat



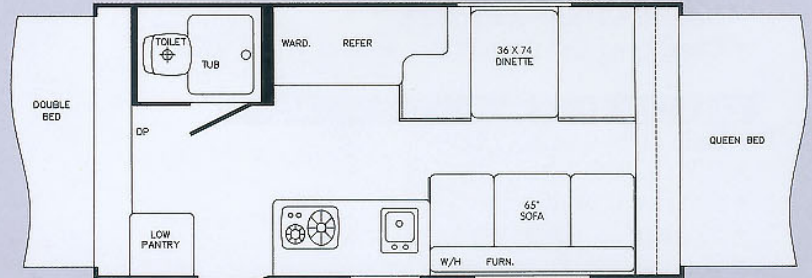
Scenic Yukon



F17



F17UL



F18



While the Bantam Flier may be compact in terms of overall size, we have designed a number of conveniently located storage compartments to handle all your travel needs.



The Rocky Mountain Edition offers all-terrain tires with mag wheels, higher ground clearance, sporty exterior graphics, and increased water capacity.



	F17	F17UL	F18
Length	17'-8"	17'-8"	18'-9"
Width (w/o Awning)	87"	87"	87"
*Hitch Dry Wt. (Appr.)	193	303	254
*Axle Dry Wt. (Appr.)	2069	2147	2358
Total Dry Wt.	2262	2450	2612
Load Cap.	931	853	1142
GVWR	3193	3303	3754
Hitch Height (Std.)	15.75"	15.75"	15.75"
Hitch Height (Rocky Mtn.)	20"	20"	20"
**Unit Height (Std.)	7'-9"	7'-9"	7'-9"
**Unit Height (Rocky Mtn.)	8'	8'	8'
Tire Size	205/75R15C	205/75R15C	205/75R15C
Fresh Water Tank Cap.	30	30	30
Fresh Water (Rocky Mtn. Ed. Option)	43	43	43
Grey Water Cap.	15	15	15
Black Water Cap.	10	10	10

** A/C Height

*Weights are approximate and based on standard features, optional equipment not included



APPLIANCES/EQUIPMENT

- Dometic Refrigerator (3 cu. ft.)
- 2-Burner Inside/Outside Range Top
- Power Range Hood w/Light
- 6 Gallon Gas Water Heater
- 20,000 BTU Ducted Furnace
- Demand Water Pump
- PEX Water Lines

BATH

- ABS Shower W/Curtain
- Thetford Toilet
- Adjustable Shower Head

CONSTRUCTION

- Welded Aluminum Framed Roof & Sidewalls, Laminated with 1" Block Foam Insulation (R-5)
- One-Piece Floor - Advantec
- Clean Bond Uni-Body Frame w/Steel Wheel Wells

ELECTRICAL

- Patio Light w/Amber Lens
- 12V Ceiling Lights
- Exterior 120V Recept
- 30 Amp, 28' Power Cord
- 32 Amp, 12V Power Convertor
- A/C Ready

EXTERIOR

- Rubber Roof
- Exterior Fiberglass Skin
- Entry Door w/Screen & Dead Bolt Lock
- 2 - 20# LP Tanks
- Rear Stabilizer Jacks
- 2-5/16" Coupler
- Clearview Tip-Out Windows
- Optional Front Jacks

INTERIOR

- Reversible Dinette Cushions
- Full Drapes w/Valances
- Mini-Blinds at Galley Window
- No-Wax Vinyl Flooring
- Inside/Outside Dinette Table
- Laminated Countertops
- TV Shelf
- Storage Drawer/Tubs

RUNNING GEAR

- 15" Tires w/White Spoked Rims
- 4" Drop Axle
- Electric Brakes - 10"
- Straight Axle (Rocky Mountain Edition)

SAFETY

- Break-a-Way Switch
- Fire Extinguisher
- Smoke Detector
- LP Detector
- Safety Chains
- Dead-Bolt Door Lock

GENERAL *WARRANTY INDEX

Rubber Roof.....	12 Years
Fiberglass Skin.....	2 Years
Weathershield Tent Fabric.....	5 Years
Structure.....	2 Years
Dometic Appliances.....	3 Years
Atwood Appliances.....	2 Years
General Camper Coverage.....	1 Year

*Refer to manufacturers specific warranty statement.



Our 58 acre complex in Warsaw, Indiana

R-Vision, Inc.

2666 S. Country Club Drive
Warsaw, IN 46580
www.trail-lite.com

As R-Vision constantly strives to improve our product, all specifications listed in this informative brochure are subject to change without notice or obligation. Photos may show optional equipment which is not included in the purchase price of the unit. Test drive and review a current model on your dealer's lot today.

©2004 R-Vision, Inc.

R-100-098