

BAY HAULER

By Trail-Lite

Enjoy the comforts of home
while taking the toys along

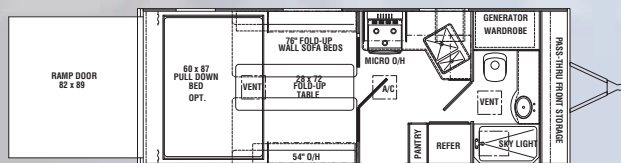


Aluminum Framed
Lightweight
Construction



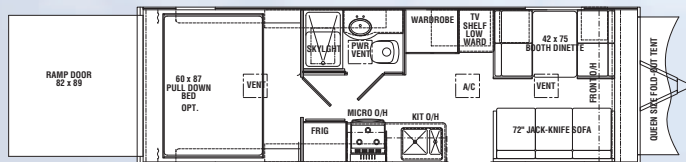
BAY HAULER

Floorplans



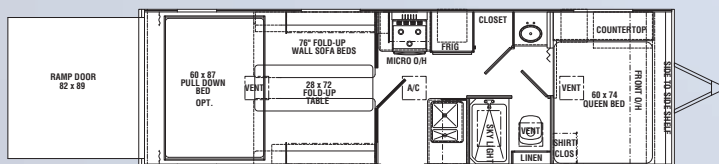
BH241

Optional Wall
Cargo Area 10' 8" With Wall
13' 3" Without Wall



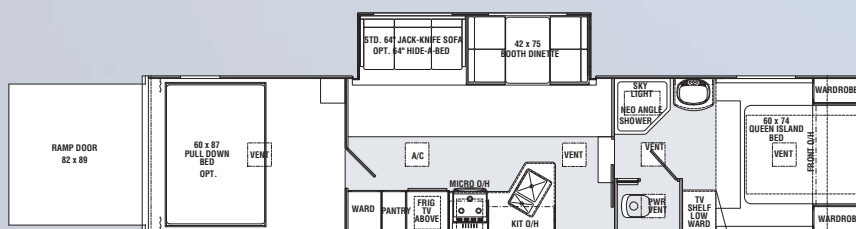
BH260

Cargo Area 8'



BH291

Optional Wall
Cargo Area 11' 9" With Wall
14' 5" Without Wall



BH3360

Cargo Area 10'

MODEL	LENGTH CLOSED	LENGTH OPEN	WEIGHT	LOAD CAP.	FRESH WATER	GRAY WATER	BLACK WATER	SLEEPING CAP.	HITCH	HEIGHT
BH 241	24'4"	31'4"	5418	5328	80 Gal.	40 Gal.	40 Gal.	6	586	11'6"
BH 291	29'8"	36'8"	6661	6284	80 Gal.	40 Gal.	40 Gal.	8	945	11'6"
BH 260	28'0"	35'	5644	5422	80 Gal.	40 Gal.	40 Gal.	4-8	906	11'6"
BH 3360	37'4"	44'4"	10308	5244	80 Gal.	80 Gal.	40 Gal.	6	1620	12'1"

Standard Features

- 1-1/2" tube ramp door with 5/8" plywood decking
- Spring assisted door
- 2 Exterior lights at loading door
- Flourescent lighting in garage area
- Enclosed, insulated, heated fresh water tank
- Advantech 3/4" performmax 500 floor
- TPO—Gas and oil resistant rubber glued to ramp
- 2 Door refer
- EZ lube hubs
- TV antenna
- Solid doors

Popular Options

- Outside shower
- DSI water heater
- Generator
- Pump station w/fuel cell
- Rear screen door
- Ladder
- Solid wall required with C.S.A. (241, 291)
- Oven
- RVQ grill
- Spare tire w/cover

- AM/FM/CD/Player
- Front pull out bed (260, 300)
- Rear pull down bed
- 13.5 BTU A/C
- Awning
- Microwave
- Sky light in bath
- Raised refer panel

R-Vision
2666 S. Country Club Drive
Warsaw, IN 46580
www.trail-lite.com

As R-Vision constantly strives to improve our product, all specifications listed in this informative brochure are subject to change without notice or obligation. Photos may show optional equipment which is not included in the purchase price of the unit.

Dealer: