

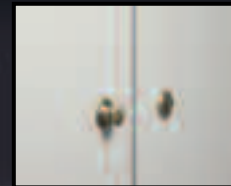
Town & Country Touring Sedan



**Town & Country**  
**Touring Sedan**  
by R-Vision

Step into R-Vision's Town & Country Touring Sedan and marvel at the comfort and convenience that is built into this versatile Class B Plus motorhome. You'll find everything you need for cross-country travel packaged into a fun and easy-to-drive size.

Whisper-Latch™ cabinet hardware enhances the attractive look of the aircraft style cabinets while keeping cabinet doors safely secured.

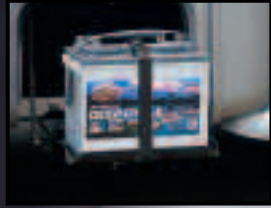


The Touring Sedan includes everything for your needs including complete bathroom facilities.

Solid surface countertops feature an integrated sink bowl with sink cover to provide a generous size work area.



The roomy luxurious aircraft styled interior is furnished with a leather/vinyl comfort lounge, fabric jack knife sofa, coordinated day/night shades, and automotive carpet. Even a surround sound home theatre package with 20" LCD TV is included to complete this richly livable home-on-the-road.



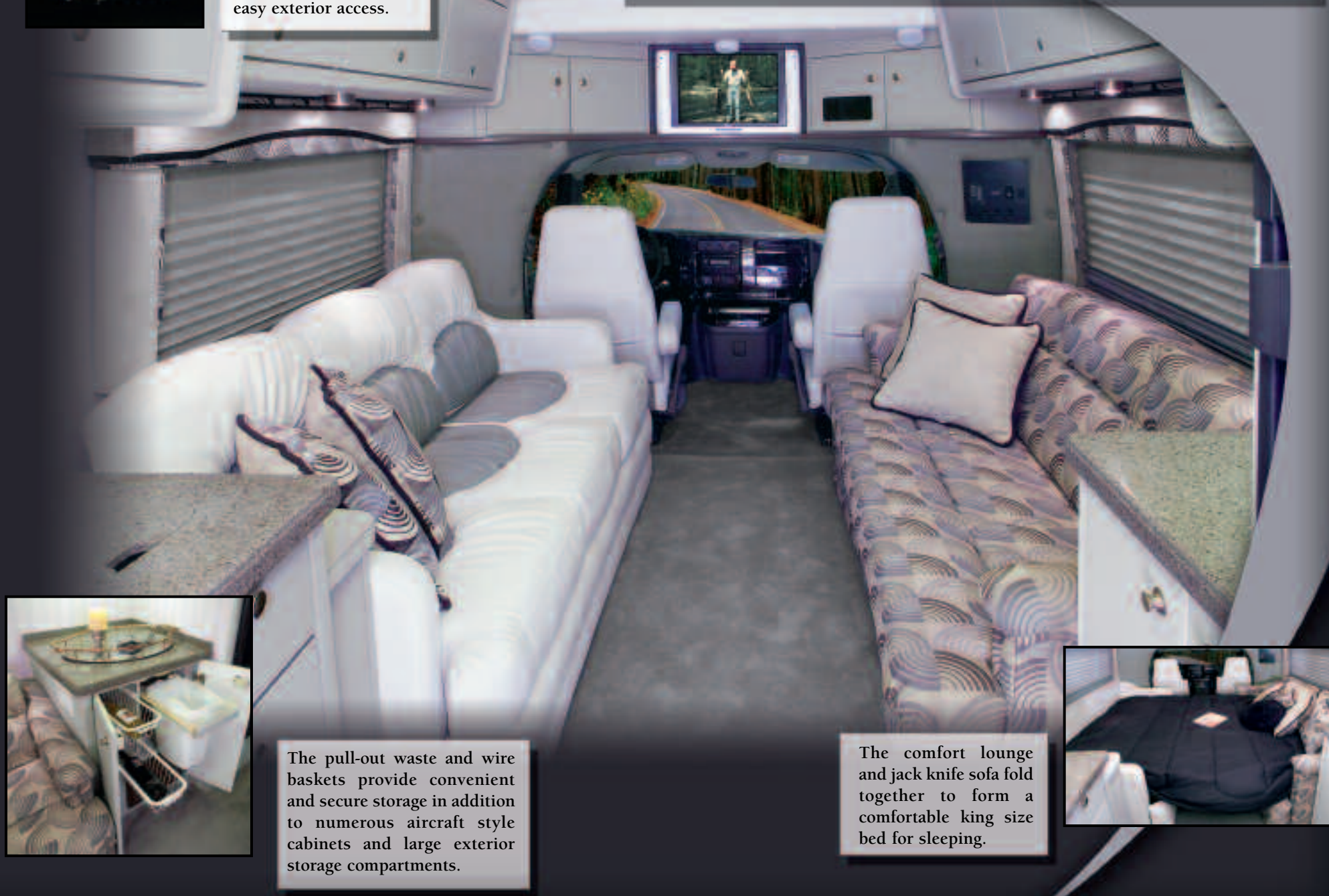
The slide-out battery tray provides quick and easy exterior access.

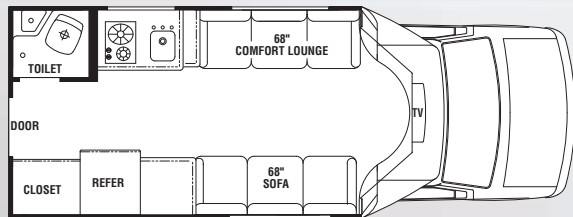


The pull-out waste and wire baskets provide convenient and secure storage in addition to numerous aircraft style cabinets and large exterior storage compartments.

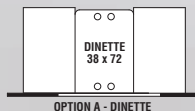


The comfort lounge and jack knife sofa fold together to form a comfortable king size bed for sleeping.





REPLACES PASSENGER SIDE SOFA



OPTION A - DINETTE



OPTION B - BARREL CHAIRS



## Specifications 210

<b>Chevy Engine</b> Vortec 6000 V8	6.0L	<b>Exterior Width</b>	94"
<b>Wheel Base</b>	139"	<b>Interior Width</b>	91"
<b>GVWR</b>	12,300	<b>Interior Height</b>	76"
<b>GAWR (Front)</b>	4,300	<b>Awning Size</b>	13'-0"
<b>GAWR (Rear)</b>	8,600	<b>Fuel Chevy (Gal.)</b>	35
<b>GCWR</b>	**	<b>LPG (Pounds)</b>	42
<b>Exterior Length</b> without spare tire	22'-10"	<b>Fresh Water</b> Capacity (Gal.)	34
<b>Exterior Height</b> with AC	10'-8"	<b>Waste Water (Gal.)</b>	23
		<b>Gray Water (Gal.)</b>	23
		<b>Furnace BTU's</b>	25,000

NOTE: \*\*GCWR GM 16,000 with 6.0L-V8 and 4.10 Rear Axle Ratio

As R-Vision constantly strives to improve our product, the specifications listed in this informative brochure are subject to change without notice or obligation. Photos may show optional equipment which is not included in the purchase price of the unit. Test drive and review a current model on your dealer's lot today.

\*Unit shown with optional chrome wheels

**Town & Country**  
Touring Sedan  
by R-Vision

## Town & Country Touring Sedan Standards & Options

### Kitchen & Appliances

- 2 Burner Drop-In Range Top
- Flush Mount Single Door Refrigerator
- Hi-Gloss Black Plexi-Glass Refrigerator Front
- Ice Chest
- Integrated Solid Surface Sink Bowl
- Microwave
- Pull Out Waste Basket and 2 Wire Baskets
- Residential Faucet with Pull Out Sprayer
- Solid Surface Countertops with Sink and Stove Covers and Back Splash

### Interior

- 20" LCD TV
- Aircraft Style Cabinets
- Automotive Carpet Throughout
- Day/Night Shades
- Deluxe Fluorescent and Halogen Light Package
- Hidden Cabinet Door Hinges
- Leather/Vinyl Comfort Lounge and Fabric Jack Knife Sofas with Throw Pillows
- Soft Touch Vinyl Ceiling
- Surround Sound Home Theatre Package
- Whisper-Latch™ Cabinet Door Hardware

### Entryway

- Deadbolt Door Lock
- Lighted Acrylic Exterior Grab Handle
- Porch Light-2

### Exterior

- Aerodynamic Curved Wall Construction

- Aerodynamic Front Fiberglass Cap
- Billet Grill
- Box Patio Awning
- Diamond Shield® Paint Protection
- Exterior Entertainment Center
- Exterior Recept.-GFI Protected
- Fiberglass Running Boards
- Front Air Dam with Fog Lights
- Full Body Paint
- Gel-Coat Fiberglass Sidewalls
- Heated/Remote Exterior Mirrors
- Hitch and Wire
- Laminated One-Piece TPO Crowned Roof
- Large Storage Compartments
- Locking Exterior Storage Doors
- One Piece Rear Fiberglass Cap
- Radius Corner Slider Windows
- Rear Mud Flaps
- Slide Out Battery Tray (2 Battery Capacity)
- Spare Tire with Continental Cover
- Stainless Steel Wheel Inserts

### Utilities

- 12V Water Pump
- 13,500 BTU Penguin Low Profile Air Conditioner
- 30 AMP 120V Power Supply
- 4.0 Onan Micro-Lite Generator with Large Access Door
- 6 Gallon Gas/Electric DSI Water Heater
- Battery Disconnect
- Carbon Monoxide Detector
- "Command Central" Systems Monitor/Switch Panel

- City Water Hook Up
- Detachable Power Cord
- Exterior Spray Port with Hose
- Fire Extinguisher
- Heated Holding Tank
- LP Gas Detector
- Single 12V Auxiliary Battery
- Smoke Detector
- Solid State 55 AMP 12V Power Converter
- Water Heater Bypass

### Cockpit

- AM/FM/Cassette/CD Big Button Radio
- Carbon Fiber Instrument Panel and Drink Tray
- Carbon Fiber/Leather Wrapped Steering Wheel
- Color Coordinated Driver Passenger Floor Mats with Throw Rugs
- Dual Air Bags
- Factory Installed Dash Air Conditioning
- Intermittent Windshield Wipers
- Power Windows and Door Locks
- Reclining Driver/Passenger Seats with Leather Inserts
- Tilt Steering Wheel and Speed Control

### Options

- 2 Barrel Chairs IPO Jack Knife Sofa (Curb Side)
- Dinette IPO Jack Knife Sofa (Curb Side)
- Large Double Door Refrigerator
- Polished Chrome Wheels (Steel Spare)

**R-Vision, Inc.**  
2666 S. Country Club Drive  
Warsaw, IN 46580  
[www.trail-lite.com](http://www.trail-lite.com)