

Trail-Lite

BY R-VISION

Not Just a Light
Weight Anymore!

Trail-Lite
Travel Trailers



Heated & Enclosed Underbelly



Trail-Lite Benefits

Super Light Weight

- Safe, easy, fuel efficient towing

Enclosed Undercarriage

- Improves fuel efficiency significantly, improves appearance, allows for much more interior storage space, better insulation and heated holding tanks. Corrosion free underbelly for effortless towing, low maintenance.

Laminated Aluminum Framed Construction

- Superior strength, light weight and exceptional durability

Aerodynamic Aluminum Front Storage Doors

- Protects LP bottles and battery. Adds exterior storage.

Lower Center of Gravity

- Stable, safe towing with today's down sized tow vehicles.

Works in the Basement

- Water tank, holding tanks, and heat ducts located under floor in the "Basement" providing for warm floors, more inside storage space, and low center of gravity.

Independent Torsion Suspension System with Radial Tires

- Unsurpassed towing stability with EZ-Lub™ hubs

Crowned Rubber Roof

- Run-off for water

One-Piece Steel Chassis (Clean-Bond)

- Not bolted together, welded for extra strength

Full Tub with 6'4" Interior Height

- Best headroom in light weight industry

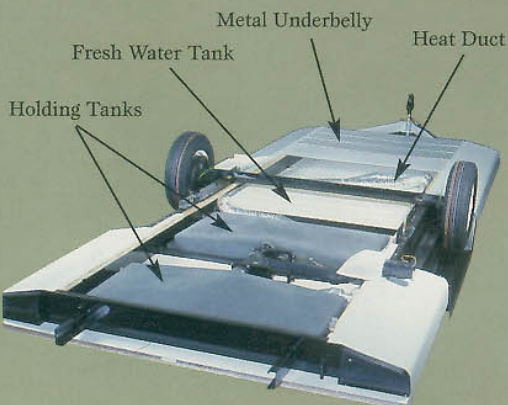
6'5" Interior Height

- Spacious feeling

Ducted Air Conditioning on All Models

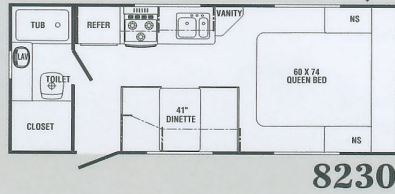


Enclosed Heated Undercarriage

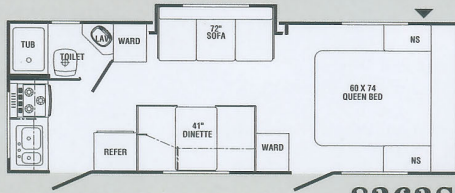




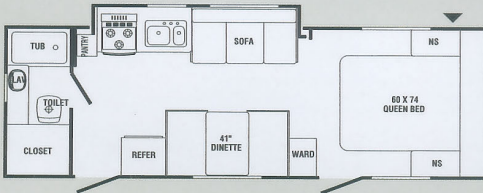
Floor Plans



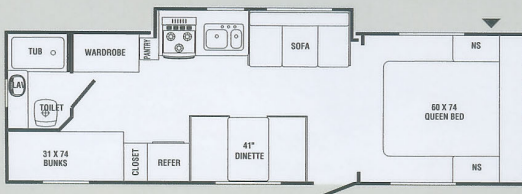
8230



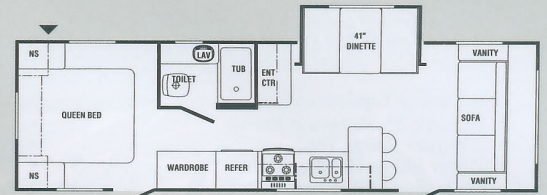
8263S



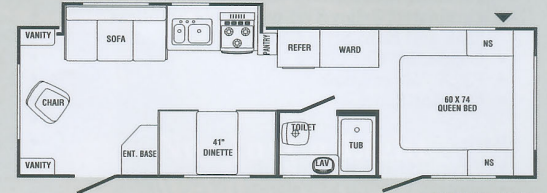
8271S



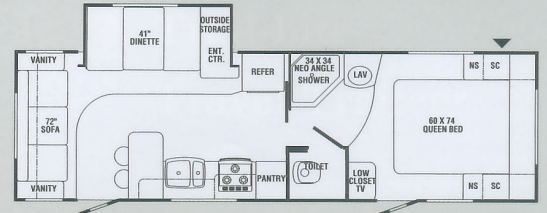
8304S



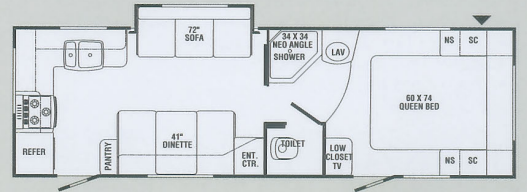
8306S



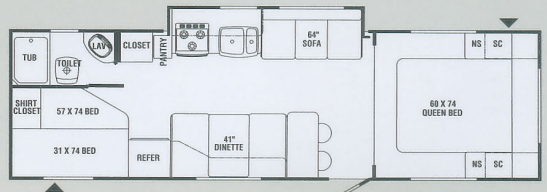
8307S



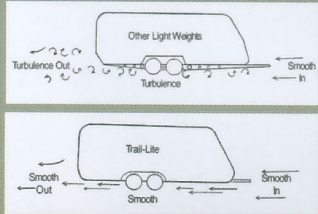
8308S



8309S



8310S



Trail-Lite uses modern race car technology to bring you towing ease and stability. Trail-Lite's enclosed chassis is clear of the exposed holding tanks, crossmembers and outriggers that create turbulence when the trailer is towed. Airflow is smooth and drag is greatly reduced. Towing a Trail-Lite is a breeze!



Chepstow



Blueberry



Seaweed



Cranberry

▲ Utility Storage Door

▼ Pass-Thru Storage

| | 8230 | 8263S | 8271S | 8304S | 8306S | 8307S | 8308S | 8309S | 8310S |
|--------------------------------|-----------|-----------|-----------|-----------|-----------|-----------|-----------|-----------|-----------|
| Length | 23'7" | 26'8" | 28'5" | 30'9" | 30'9" | 30'9" | TBD | TBD | TBD |
| Width (w/o Awning) | 96" | 96" | 96" | 96" | 96" | 96" | 96" | 96" | 96" |
| Height (w/AC) | 10' | 10' | 10' | 10' | 10' | 10' | 10' | 10' | 10' |
| Awning Length | 15' | 18' | 19' | 19' | 20' | 20' | TBD | TBD | TBD |
| * Hitch Dry Wt. (Appr.) | 338 | 315 | TBD | 412 | 640 | TBD | TBD | TBD | TBD |
| * Axle Dry Wt. (Appr.) | 3532 | 4154 | TBD | 4434 | 4440 | TBD | TBD | TBD | TBD |
| Total Dry Wt. | 3870 | 4469 | TBD | 4846 | 5080 | TBD | TBD | TBD | TBD |
| Load Cap. | 2068 | 1446 | TBD | 1166 | 1160 | TBD | TBD | TBD | TBD |
| Tire Size | 205/75R14 | 205/75R14 | 205/75R14 | 205/75R14 | 205/75R14 | 205/75R14 | 205/75R14 | 205/75R14 | 205/75R14 |
| Fresh Water Tank Cap. | 30 | 30 | 30 | 30 | 30 | 30 | 30 | 30 | 30 |
| Grey Water Cap. | 30 | 30 | 30 | 30 | 30 | 30 | 30 | 30 | 30 |
| Black Water Cap. | 30 | 30 | 30 | 30 | 30 | 30 | 30 | 30 | 30 |

*Weights are approximate and based on standard features, optional equipment not included.

Specifications



Appliances/Equipment

- Dometic Flush Mount Refrig.
- 3 Burner Range Top
- Power Range Hood w/Light
- Six Gallon DSI Water Heater
- Furnace 30,000 BTU
- Air Conditioner Ready
- Water Heater Bypass Kit
- Demand Water Pump
- Laminated Galley Top w/Double Stainless Sink and Euro Style Faucet
- Copper LP Gas Lines
- P.E.X. Water Lines
- Monitor Panel

Bath

- Fiberglass Reinforced Tub
- Shower Curtain w/Valance
- Thetford Toilet
- Medicine Cabinet w/Mirror
- Towel Bar, Toothbrush Holder and Tissue Holder
- Power Roof Vent
- Light w/Wall Switch
- Large Bath Sink
- Full Tub w/6'4" Height

Electrical

- Patio Light w/Amber Lens
- Ceiling Lights w/Wall Switches
- 120 Volt GFI Protected Circuits
- 120 Volt Fuse Panel
- Outside 120 Volt Receipt
- 30 Amp, 28' Power Cord (Detachable)
- 55 Amp, Whisper Quiet Converter w/Charger
- Battery Box w/Positive Ventilation
- Pre-Wired for Air Conditioner
- Pre-Wired for Microwave

Exterior

- Crowned Rubber Roof
- Powder Coated Steel Chassis
- Tinted Jalousie Windows
- Aerodynamic Front Profile
- Flush Mount Front Window/Awning
- 26" Entry Door(s) w/Radius Corners, Window, Screen Door, and Flush Mount Latch
- Locking Baggage Doors
- Self-Storing Step(s) (Powder Coated)
- Large Front Storage Compartment
- Enclosed 30# LP Tanks
- 2-5/16" Coupler
- Break-away Switch
- Enclosed, Heated Underbelly
- Sewer Hose Compartment (Behind License Plate Bracket)
- Easy Access Dump Valves

Interior

- Panoramic Galley Window
- Reversible Dinette Cushions
- Mini Blind at Galley
- No-wax Vinyl Flooring
- "Euro Look" Overhead Cabinets w/Under Cabinet Shelves
- Maple Mortise and Tenon Cabinet Doors w/Struts
- Hidden Plumbing and Wiring
- High Pressure, Laminated Plywood Countertops
- Queen Bed w/Quilted Pillow Top Bedspread
- Light/Air Roof Vent(s)
- Fire Extinguisher, Smoke Detector, LP Detector
- Soft Touch Vinyl Ceiling
- Cabinets and Slide-Out Facia
- Large Residential Kitchen Sink

- Designer Radiused Window Treatment
- Under Bed Storage w/Struts

Running Gear

- 14" Radial Trailer Tires
- White Spoke Wheels w/10" Electric Brakes
- Independent Torsion E-Z Lube Hubs Suspension System, Rubber Ride
- Seamless "Roto-Cast" Wheel Wells
- Welded, Box Channel, Tubular Steel Frame

Super Lite Weight

- Enclosed Chassis/Undercarriage
- Aerodynamic Front Profile
- Laminated Aluminum Frame Construction
- Thick Wall Construction (2")
- Fiberglass Exterior Skin
- Enclosed LP Bottle Area
- Low Center of Gravity
- Box Channel, Steel Chassis
- TINTED Jalousie Windows
- Ducted Air Conditioning (All Models)
- Aluminum Front Storage Doors
- Shirt Closets Beside Queen Beds

General Warranty Information*

| | |
|------------------------------|----------|
| • Rubber Roof | 12 Years |
| • Fiberglass Skin | 2 Years |
| • Clean Bond Painted Chassis | 1 Year |
| • Structure | 2 Years |
| • Dometic Appliances | 3 Years |
| • Atwood Appliances | 2 Years |
| • Liftco Slideout Mechanism | 5 Years |
| • Suspension System | 5 Years |
| • General Camper Coverage | 1 Year |

*Refer to specific written warranty statement

Towing Guide

Listed below are tow ratings that are the highest available for the respective 2004 models. Certain optional equipment may be required and other restrictions may apply. Check with your automotive dealer for exact specifications.

| VEHICLE | ENGINE | TOW LIMIT | | | | | | | | | | |
|---------------------------|--------------|-----------|-------------------------|--------------|------|----------------------|---------|------|----------------------------------|--------------|------|---------------------------|
| Acura | | | Dakota (4WD) Reg. Cab. | 4.7 V-8 | 6300 | Kia | | | Pontiac | | | |
| MDX | | | Dakota (4WD) Club Cab. | 3.7 V-6 | 4500 | Sedona | 3.5 V-6 | 3500 | Aztec | 3.4 V-6 | 3500 | |
| RL | 3.5 V-6 | 3500 | Dakota (4WD) Club Cab. | 4.7 V-8 | 5100 | Sorento | 3.5 V-6 | 3500 | Montana | 3.4 V-6 | 3500 | |
| AM General | | | Durango (4WD) | 4.7 V-8 | 5700 | Land Rover | | | Subaru | | | |
| Hummer H2 | 6.0 V-8 | 6700 | Durango (4WD) | 5.9 V-8 | 7300 | Discovery | All | 5500 | Legacy/Outback/Forester | 2.5 SOHC I-4 | 2000 | |
| Buick | | | Ram (2WD) 1500 All Cab. | 4.7 V-8 | 5750 | Range Rover | All | 7700 | Toyota | | | |
| Rendezvous | 3.4 V-6 | 3500 | Ram (4WD) 1500 All Cab. | 5.7 V-8 | 7300 | Lexus | | | 4 Runner | 3.4 V-6 | 5000 | |
| BMW | | | Ram Quad B1500 | 4.7 V-8 | 5400 | RX300 | 3.3 V-6 | 3500 | Land Cruiser | 4.7 V-8 | 6500 | |
| X5 | 4.6 V-8 | 5950 | Ram Quad B2500 | 3.7 V-8 | 8300 | LX470 | 4.7 V-8 | 6500 | Sienna | 3.3 V-6 | 3500 | |
| X5 | 4.4 V-8 | 5950 | Ford | | | Lincoln | | | Tacoma | 3.4 V-6 | 5000 | |
| Cadillac | | | Econoline Van | 4.6 V-8 | 6500 | Aviator | 4.6 V-8 | 7100 | Tundra (4WD) | 4.7 V-8 | 7200 | |
| Escalade AWD | 6.0 V-8 | 8200 | Econoline Van | 5.4 V-8 | 6900 | Navigator | 5.4 V-8 | 8800 | | | | |
| SRX | ALL | 3500 | Expedition (4WD) | 4.6 V-8 | 5000 | Mazda | | | | | | |
| Chevrolet/GMC | | | Expedition (2WD) | 4.6 V-8 | 5000 | B3000 (4WD) | 3.0 V-6 | 2560 | | | | |
| Astro/Safari (AWD) | 4.3 V-6 | 5000 | Expedition (4WD) | 5.4 V-8 | 6000 | B4000 | 4.0 V-6 | 5760 | | | | |
| Astro/Safari (RWD) | 4.3 V-6 | 5200 | Explorer (2WD) | 4.0 V-6 | 5780 | B4000 (4WD) | 4.0 V-6 | 5580 | | | | |
| Blazer/Jimmy (4WD) | 4.3 V-6 | 5500 | Explorer (4WD) | 4.0 V-6 | 5380 | Tribute | 3.0 V-6 | 3500 | Options | | | APPROX. WT. (LBS.) |
| Colorado | 3.5 I-5 | 4000 | F-150 Reg. Cab. (2WD) | 4.2 V-6 | 3500 | Mercedes-Benz | | | Air Conditioning, 13,500 BTU | 104 | | |
| Express/Savana/G1500 | 5.3 V-8 | 6200 | F-150 Reg. Cab. (2WD) | 4.6 V-8 | 5800 | G-500 | 5.0 V-8 | 7000 | AM/FM CD Player | 4 | | |
| Express/Savana/G1500 | 5.3 V-8 | 6600 | Infiniti | | | ML 350 | 5.0 V-8 | 5000 | Awning, A & E | 40-60 | | |
| Express/Savana/G2500 | 6.0 V-8 | 8400 | FX 35/45 | ALL | 3500 | ML5AMG | 5.4 V-8 | 7000 | Swivel Rocker Chair | 35 | | |
| Express/Savana/G2500/3500 | 6.0 V-8 | 8300 | Honda | | | Mercury | | | Microwave | 30 | | |
| K1500 Ext. Cab. (4WD) | 4.8 V-6 | 6600 | Pilot | 3.5 V-6 | 3500 | Mountaineer | 4.0 V-6 | 5400 | Oven | 30 | | |
| S Series/Sonoma | 4.3 V-6 | 5200 | Odyssey | 3.5 V-6 | 3500 | Mountaineer | 4.6 V-8 | 7300 | Spare Tire & Wheel | 35 | | |
| Silverado/Sierra/C/K 1500 | 4.3 V-6 | 4800 | Hyundai | | | Villager | 3.3 V-6 | 3500 | Stabilizer Jacks (Four) | 24 | | |
| Chrysler | | | Santa Fe (2WD) | 2.7 V-6 | 3200 | Mitsubishi | | | TV Antenna/Cable/Satellite Ready | 6 | | |
| Town & Country | 3.3, 3.8 V-6 | 3800 | Santa Fe (4WD) | 2.7 V-6 | 2700 | Montero Limited, XLS | 3.5 V-6 | 5000 | Roof Ladder | 5 | | |
| Dodge | | | Isuzu | | | Montero Sport ES, LS | 3.0 V-6 | 5000 | Outside Grill | 15 | | |
| Caravan | 3.3, 3.8 V-6 | 3800 | Rodeo/Rodeo Sport | 2.2, 2.6 I-4 | 2500 | Endeavor | 3.8 V-6 | 3500 | Outside Shower | 3 | | |
| Caravan | 3.8 V-6 | 3500 | Rodeo | 3.2 V-6 | 4500 | Nissan | | | Outside Sliding Drawer | 36 | | |
| Dakota (2WD) Reg. Cab. | 3.7 V-6 | 4900 | Ascender (4WD) | 4.2 I-6 | 5300 | Pathfinder | 3.5 V-6 | 5000 | Sink Cover | 1 | | |
| Dakota (2WD) Reg. Cab. | 3.7 V-6 | 5300 | Axiom | 3.5 V-6 | 7000 | Frontier (4WD) | 3.3 V-6 | 5000 | Stove Cover | 1 | | |
| Dakota (2WD) Reg. Cab. | 4.7 V-8 | 5600 | Jeep | | | Xierra | 3.3 V-6 | 5000 | Tub Surround | 10 | | |
| Dakota (2WD) Club Cab. | 4.7 V-8 | 6450 | Grand Cherokee | 4.0 I-6 | 5000 | Quest | 3.5 V-6 | 3500 | Double Entry Step | 7 | | |
| Dakota (4WD) Reg. Cab. | 3.7 V-6 | 3850 | Grand Cherokee | 4.7 V-8 | 6500 | Oldsmobile | | | Chrome Trim Rings w/Cap | 3 | | |
| | | | Liberty | 2.4 I-4 | 2000 | Bravada | 4.2 I-6 | 6300 | Raised Panel Overhead Door | 5 | | |
| | | | Liberty | 3.7 V-6 | 5000 | Silhouette | 3.4 V-6 | 3500 | Raised Panel Refer Door | 3 | | |
| | | | Wrangler | 4.0 I-6 | 2000 | | | | Fan-Tastic Fan | 15 | | |
| | | | | | | | | | 2 Bar Stools | 20 | | |

R-Vision, Inc.
2666 S. Country Club Drive
Warsaw, IN 46580
www.trail-lite.com



Our 58 acre complex in Warsaw, Indiana

As R-Vision constantly strives to improve our product, all specifications listed in this informative brochure are subject to change without notice or obligation. Photos may show optional equipment which is not included in the purchase price of the unit. Test drive and review a current model on your dealer's lot today.
©2004 R-Vision, Inc. R-100-100