

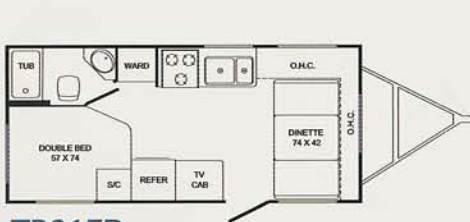
Trail-Bay

BY R-VISION

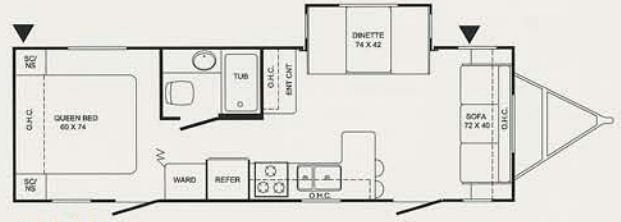


Travel Trailers &
Fifth Wheels

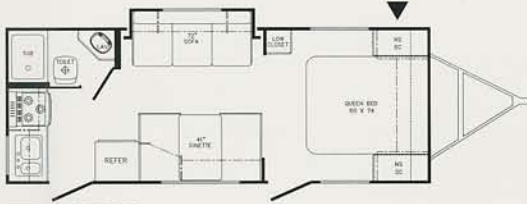
TRAVEL TRAILER FLOORPLANS



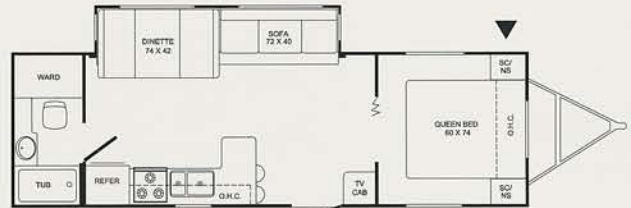
TB21FD



TB27DS



TB23RKS



TB27FB



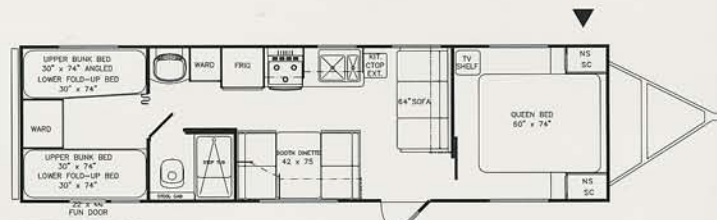
TB26BHS



TB27FK



TB26BH



TB32BH

▼ Pass-Thru Storage

TRAVEL TRAILER SPECS	TB21FD	TB23RKS	TB26BHS	TB26BH	TB27DS	TB27FB	TB27FK	TB32BH	TB31BH
Length	21'5"	N/A	28'3"	N/A	29'5"	29'1"	29'1"	N/A	31'9"
Width (w/o Awning)	96"	96"	96"	96"	96"	96"	96"	96"	96"
* Hitch Dry Wt. (Appr.)	487	N/A	729	N/A	693	960	800	N/A	703
* Axle Dry Wt. (Appr.)	3196	N/A	4610	N/A	4248	5060	5460	N/A	5194
Total Dry Wt.	3683	N/A	5339	N/A	4941	5540	6260	N/A	5897
Load Cap.	3804	N/A	2390	N/A	2752	2420	1540	N/A	3606
GVWR	7487	N/A	7729	N/A	7693	7960	7800	N/A	9503
Tire Size	205/75R14C	205/75R14C	205/75R15C	205/75R14C	205/75R14C	205/75R15C	205/75R15C	225/75R15D	225/75R15D
Fresh Water Tank Cap.	40	40	40	40	40	40	40	40	40
Grey Water Capacity	40	40	40	40	40	40	80	40	40
Black Water Capacity	40	40	40	40	40	40	40	40	40

*Weights are approximate and based on standard features, optional equipment not included

Trail-Bay

BY R-VISION



The all-new Trail-Bay 5th wheel from R-Vision features a single-level, stand-up bedroom and bath area with bed slides available on select models. With fully welded aluminum/laminated sidewalls, aluminum roof trusses and aluminum floor joists, Trail-Bay is the lightest and most solidly constructed 5th wheel in the market. The entertainment center in this model (right) accommodates a 25" TV, while the flush floor slide offers increased spaciousness.



Model TB5531RL



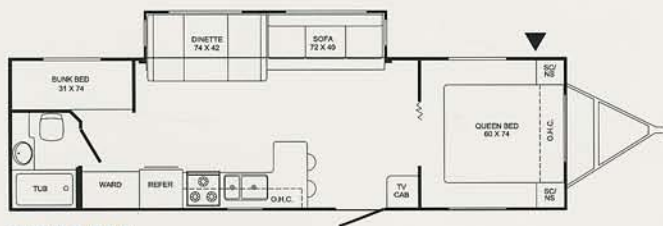
The combination of maple panels—both beaded and plain—provides a unique, elegant look. Couple this new look with quality construction including plywood countertops, tongue and groove plywood floors and screwed cabinet fronts giving both form and function.

The all-new Trail-Bay travel trailer series features solid maple raised-panel cabinet doors above and below with fluted slide-out fascia for the look of luxury. Professionally selected interior decors add to the elegance and spaciousness of our well thought-out floorplan designs.

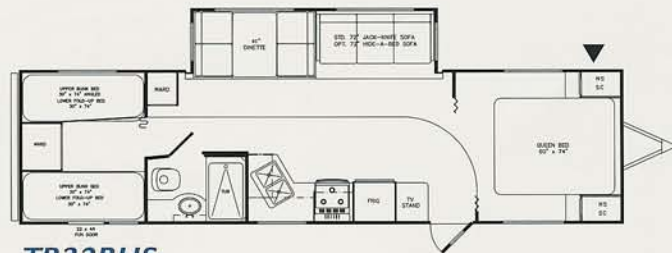
The bedroom of the Trail Bay travel trailer (shown above) offers an inviting retreat with loads of overhead storage, nightstands with drawers and extra lighting for night time reading.



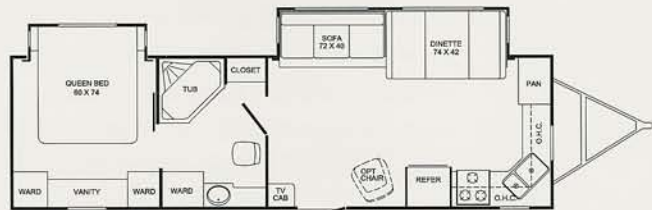
Model TB27DS



TB31BH



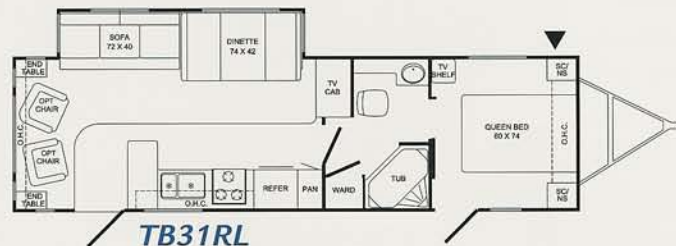
TB32BHS



TB31FKB



TB31FK



TB31RL

TRAVEL TRAILER VALUE PACKAGE:

- 13.5K BTU Air Conditioner (15K BTU also available)
- A & E Awning
- Microwave
- Skylight
- Raised Panel Maple Cabinet Doors
- Raised Panel Maple Refrigerator Door Insert
- 2-Door Refrigerator
- EZ-Lube Hubs
- Large Galley Window
- Fluorescent Galley Light
- Hi-Rise Galley Faucet
- Safety Grab Handle
- Radius Entry Door (1-2 Radius)

Note: This Value Package is Only available on Travel Trailers, and is Not available on 5th wheels.

SETTING NEW STANDARDS FOR AFFORDABLE LUXURY LIVING

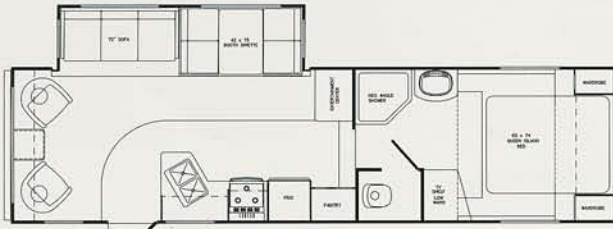
B31FKB	TB31FK	TB31RL	TB32BHS
31'11"	31'9"	31'9"	N/A
96"	96"	96"	96"
972	840	702	N/A
5788	5660	5772	N/A
6760	6500	6467	N/A
3012	3140	4388	N/A
9772	9640	10862	N/A
5/75R15D	225/75R15D	225/75R15D	225/75R15D
40	40	40	40
80	80	80	80
40	40	40	40

FIFTH WHEEL SPECS

Length	N/A	31' 3"	N/A	33' 4"	35' 6"
Width (w/o Awning)	96"	96"	96"	96"	96"
*Hitch Dry Wt. (Appr.)	N/A	1141	N/A	1617	2347
*Axle Dry Wt. (Appr.)	N/A	7036	N/A	7486	7642
Total Dry Wt.	N/A	8177	N/A	9103	9989
Load Cap.	N/A	1564	N/A	4514	4358
GVWR	N/A	9741	N/A	13617	14347
Tire Size	N/A	225/75R15C	N/A	235/80R16D	225/85R16D
Fresh Water Tank Cap.	40	40	40	40	40
Grey Water Capacity	40	80	40	40	40
Black Water Capacity	40	40	40	40	40

**Weights are approximate and based on standard features, optional equipment not included*

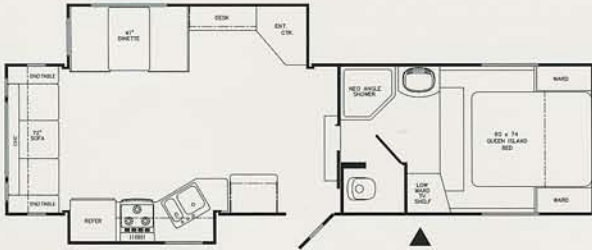
FIFTH WHEEL FLOORPLANS



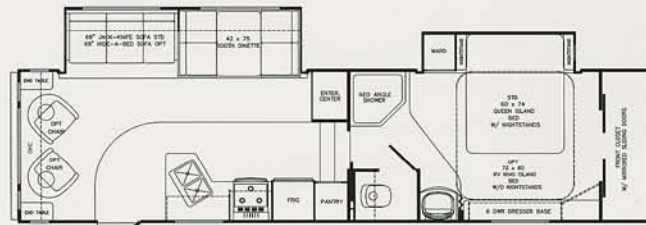
TB3529RL



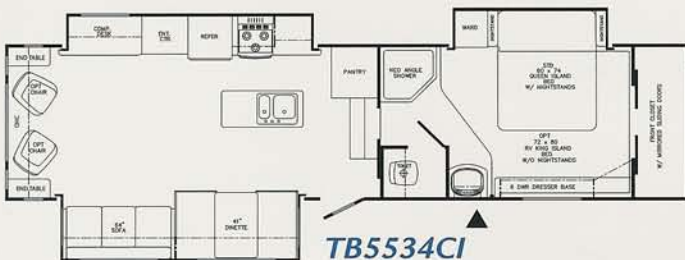
TB3529BH



TB3529DK



TB5531RL



TB5534CI



You will be amazed with the Trail Bay's large pass-thru storage space - on 5th wheels (shown here).



SPECIFICATIONS



Appliances/Equipment

- Dometic Refrigerator, Flush Mount
- 3 Burner Range Top, High Output
- Microwave Ready
- Power Range Hood w/Light
- RVQ Grill Ready
- Monitor Panel
- Six Gallon Gas/Elec Water Heater w/Autoreignite
- Furnace w/In-Floor Ducted Heat
- Air Conditioner Ready
- Duct for A/C (Most Models)
- Water Heater Bypass Kit
- Demand Water Pump
- Laminated Plywood Countertop and Table Top
- Double Bowl, Acrylic Kitchen Sink
- Copper LP Gas Lines
- (2) LP Tanks (TT-20#, FW-30#)
- Heated/Enclosed Fresh Water Tank

Bath

- Bath Tub
- ABS Surround
- Glass Shower Enclosure (FW only)
- Shower Curtain w/Tieback
- Marine Type Stool
- Medicine Cabinet w/Mirror
- Towel Rack On Door
- Power Roof Vent
- Laminated Plywood Counter Top

Electrical

- 120 Volt GFI Protected Circuit(s)
- 120 Volt Breaker Panel
- 30 Amp, 28' Power Cord
- 55 Amp, Whisper Quiet Converter w/Charger
- Pre-Wired For Air Conditioner
- Pre-Wired For Microwave
- 12 Volt Ceiling Lights
- Outside, 120 Volt Receptacle
- Battery Rack

Exterior

- Rubber Roof w/12 Year Warranty
- Rain Gutter w/Corner Down Spouts
- Entrance Door w/Screen & Deadbolt Lock
- Radius Corner Storage Door(s)
- Triple Step - at Entrance (Where Available)
- Sewer Hose Storage In Bumper
- Patio Light
- Hitch Light
- Vinyl Exterior Graphics
- Darco Underbelly
- Over 57 Cubic Feet Pass Thru Storage (FW only)
- Pass Thru Storage (Most TT)

Interior

- Professional Grade Vinyl Flooring
- Upholstered Window Bays In Living Area
- Coordinated Drapes, Bedroom Area
- Mini Blinds Throughout
- Queen Bed w/Reinforced Bed Base
- Bedspread
- Wood Drawer Sides
- Radius Cabinet Stiles
- Hinged Dinette Seat Lids
- Reversible Dinette Cushions
- Mirrored Cabinet Doors In Bedroom
- Decorative Border (Kitchen)
- Composite Floor Registers
- Silverware Tray
- Solid Maple Knife Holder
- Spice Rack
- Maple Framed Cabinet Doors (mortise & tenon joints)
- Cable Ready TV Hook Up w/Booster
- Bedroom TV Hook-Up
- Light/Air Roof Vents
- Bar Stools (Where Applicable)
- RCA Jacks for TV Hook-Up to Stereo (w/Stereo Option FW only)

Construction

- 3/8" Wood Decking, Roof, Full Length of Coach (Walk-On Roof)
- 5" Aluminum Truss Roof Rafters (FW only)
- 5/8 Tongue & Groove Plywood Floor Decking
- 2" X 3" Aluminum Floor Joists (FW only)
- Tubular/I-Beam Steel Frame
- Large, Welded Frame Outriggers
- Fully Welded Aluminum Framing
- Laminated Walls; Aluminum Framed, Polystyrene Block Insulation (R-7), Fiberglass Exterior
- Butyl-Tape Exterior Molding Sealants
- Galvanized Steel Wheel Wells
- Framed, Braced And Wires for A/C
- Under Floor Heat Ducts
- Air Conditioning Ducted (Most Models)
- 1" Advantech Slideout Floor

Running Gear

- Radial Trailer Tires
- White Spoked Wheels - w/Hub Caps
- Electric Brakes, All Wheels
- Tandem Axles w/Equalizer
- EZ Lube Hubs (Opt. T.T. - Std. 5th Wh.)
- D-Seal for Windows w/anti-wick

Safety

- Emergency Egress Window (Where Required)
- Fire Extinguisher
- Smoke Detector
- LP Detector
- Break Away Switch
- Clearance Lights
- Safety Chains (TT Only)

Your Dealer



R-Vision, Inc.

2666 S. Country Club Drive ■ Warsaw, IN 46580

www.trail-lite.com

As R-Vision constantly strives to improve our product, all specifications listed in this informative brochure are subject to change without notice or obligation. Photos may show optional equipment which is not included in the purchase price of the unit. Test drive and review a current model on your dealer's lot today.

1M_CDS 11/03